



# Knowledge Organiser



## Knowledge Organiser Key Stage 3

Subject: MUSIC

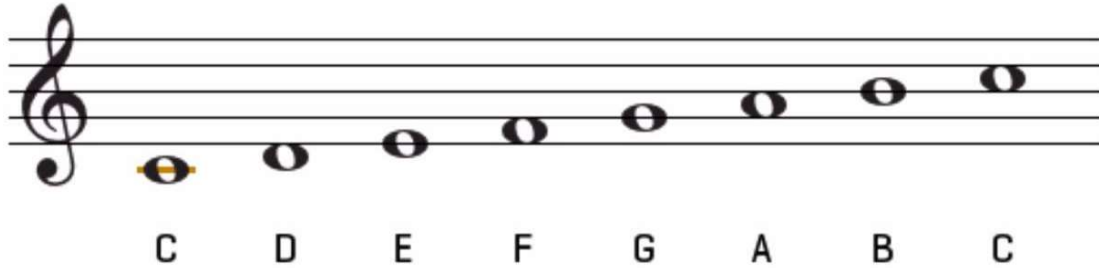
Year: 7

Topic Title: MUSIC AND MEANING

### Lesson 2 – Music and Meaning – Tonality

#### Key Facts from this lesson

A **scale** is a set of notes that music is created from. **Tonality** is the principle of describing music based on the **scale** used. The **tonality** also tells us which note to start the **scale** on. When we put the two together, we get the **key** of the music. For example; below is a **scale**. It starts on C and is major. Therefore the **key** is C major.



#### Music and Meaning

##### Tonality

Music written in a **major key** often sounds bright and happy

Music written in a **minor key** often sounds dark and sad

##### Keywords in a sentence

The piece of music is written in a **major key**

The piece of music is written in a **minor key**

The melody uses the C **major scale**

The melody is based around the B **minor scale**

##### Key words and definitions from this lesson:

- ★ **Scale** – a set of note that music is created from
- ★ **Tonality** – the principle of describing music based on the scale used
- ★ **Major (Scale)** – a type of scale that sounds bright and happy
- ★ **Minor (Scale)** – a type of scale that sounds dark and sad
- ★ **Key** – describes the scale used in a piece of music
- ★ **Key Signature** – sharps/flats that tells a musicians which notes will be sharp/flat in the piece of music

##### Diagrams/ Maps/ illustration to help with learning

##### Key Signatures



C major  
A minor



G major  
E minor



F major  
D minor



Bb major  
G minor

A **key signature** is placed at the beginning of a piece of music and tells us which notes are sharp/flat for the duration of the piece.

Each key signature has a **major** and **minor** scale attached to it.



F major  
D minor

In this key signature, every B will be replaced with B flat. This means that if you see a B you would play a B flat